



Changjiang Runfa Machinery Co., Ltd.
Introduction 2021
Prepared for OTIS

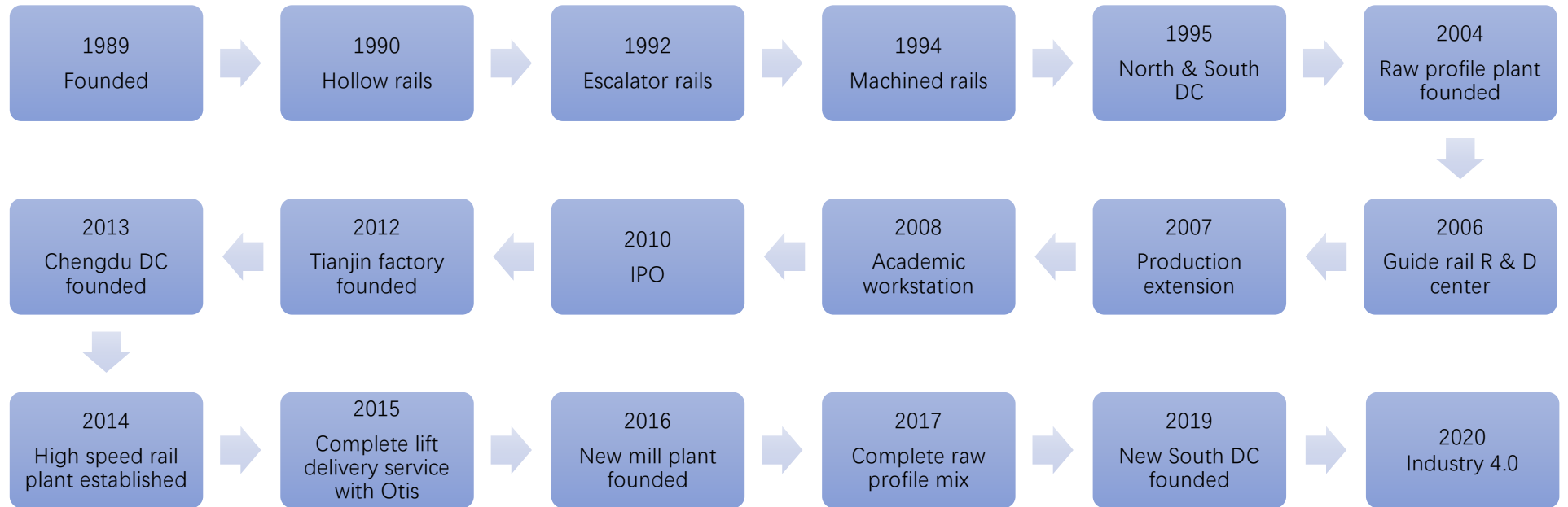
Location



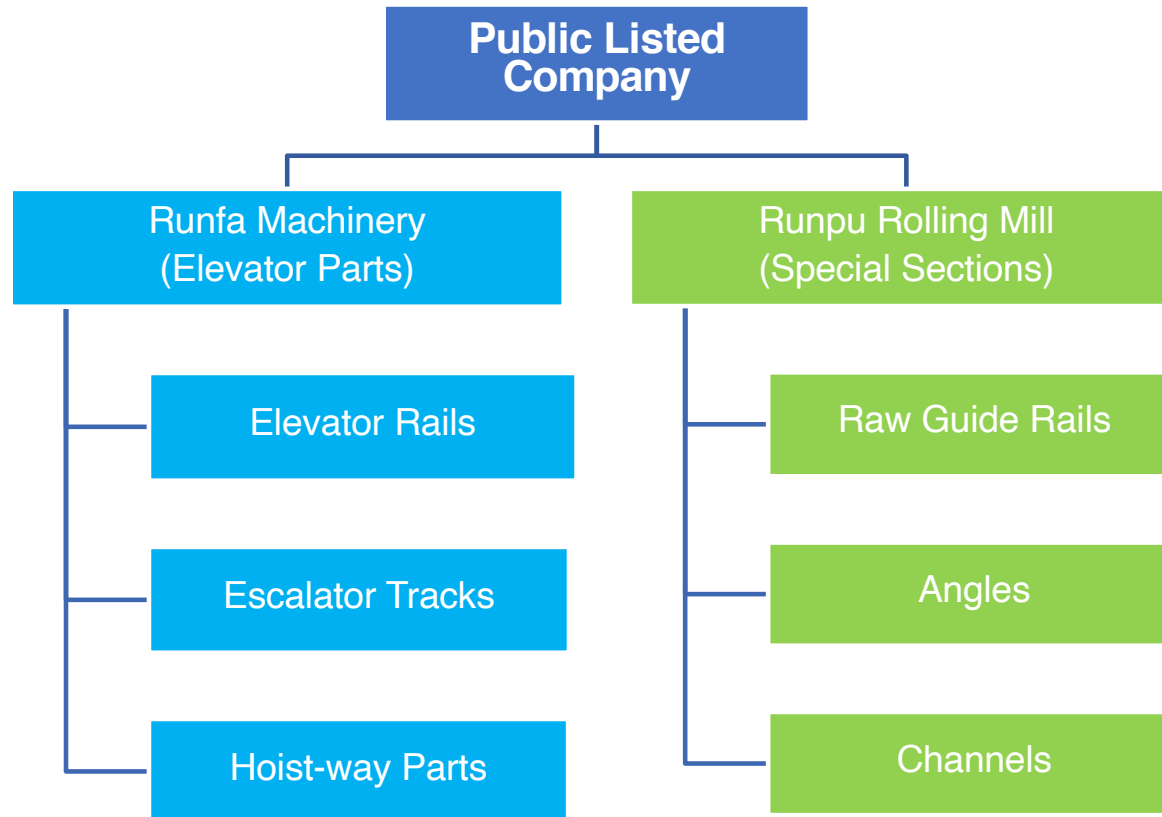
Strategic Location
Excellent Port Condition

Zhangjiagang, Suzhou
Yangtze Delta Economic Circle
Free Trade Area
Bonded Logistics Park
Zhangjiagang Sea Port

History

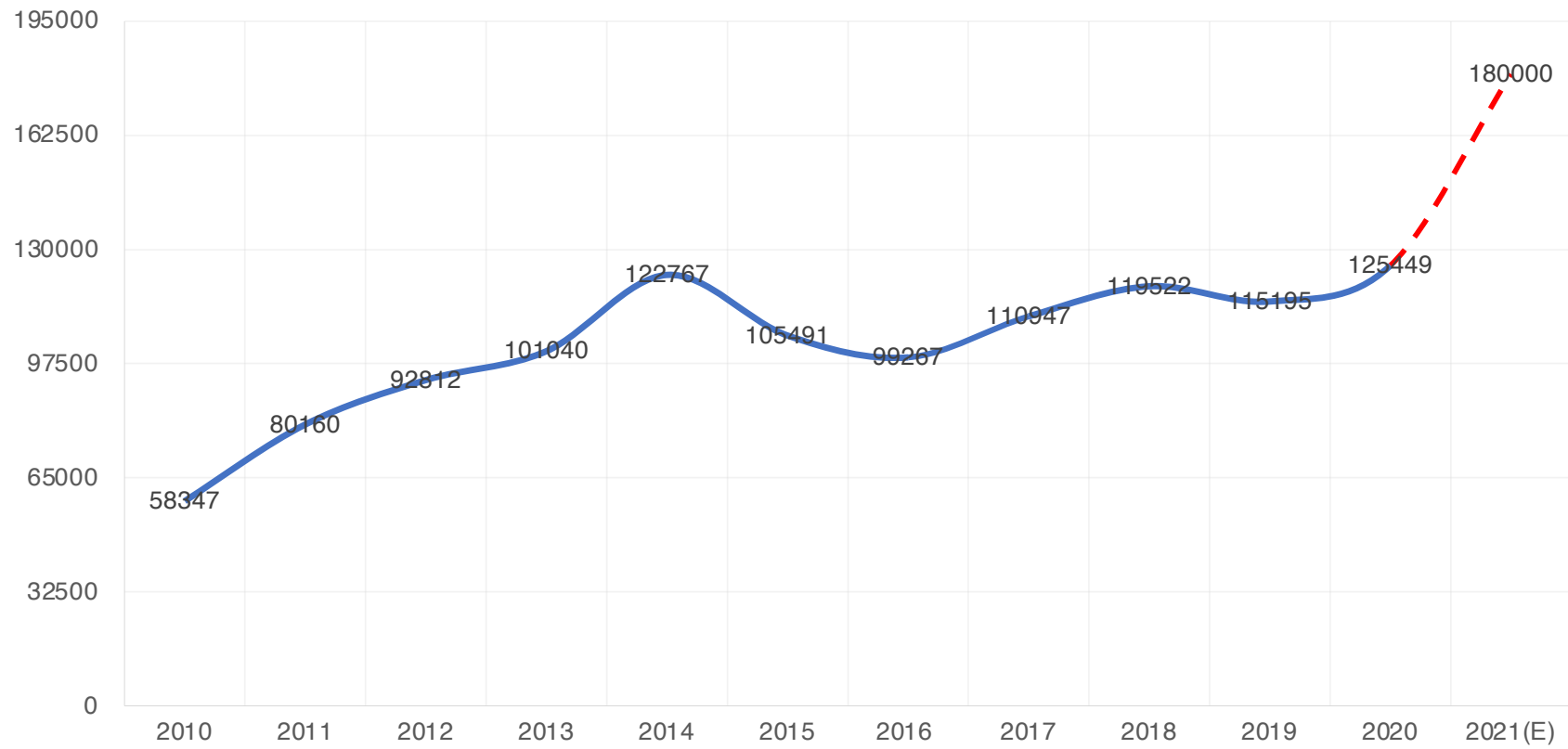


Business Unit



Turnover

Unit: CNY10K



Key Accounts

OTIS

 上海三菱电梯
SHANGHAI MITSUBISHI ELEVATOR

HITACHI
Inspire the Next

KONE

 三菱电机
MITSUBISHI ELECTRIC
Changes for the Better

 現代電梯
HYUNDAI ELEVATOR


thyssenkrupp

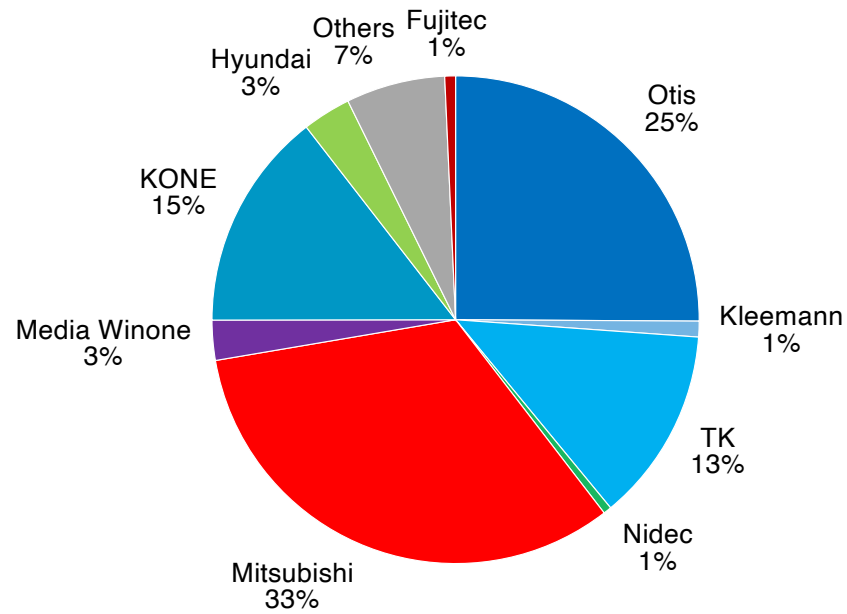
FUJITEC

Nidec 尼得科
All for dreams

Not for Commercial Purpose

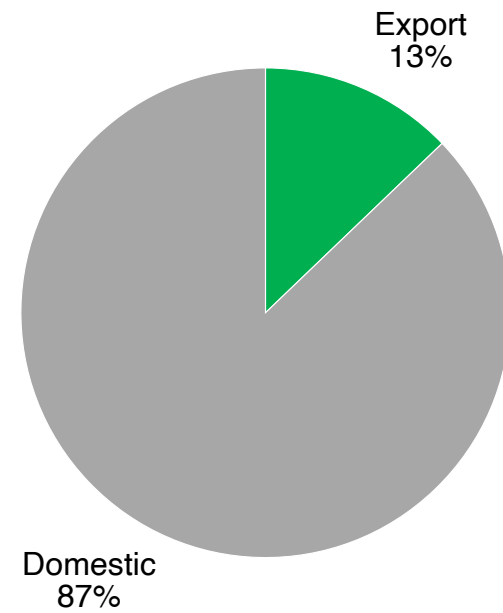
Key Accounts Supplies

2020FY



Domestic & Export Sales

2020FY



Classic High Rise of Skyscrapers

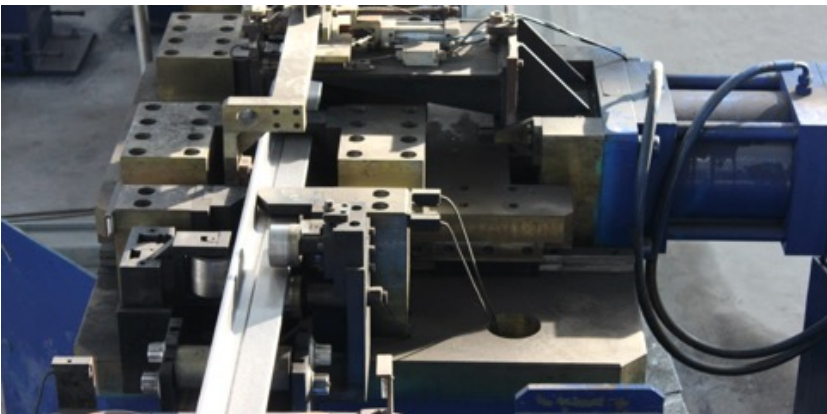


Honors



Elevator Parts

Facilities & Process



Guide Rail Series



Solid rails

(Capacity 230,000 tons)



Hollow rails

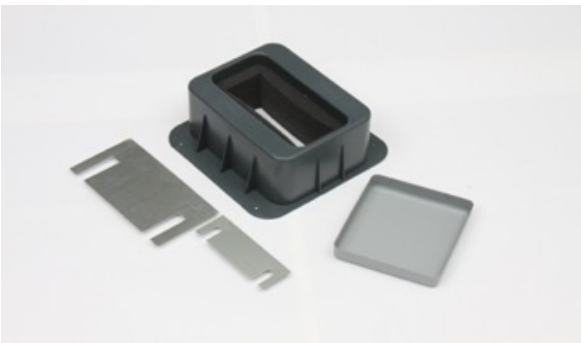
(Capacity 40,000 tons)



Escalator rails

(Capacity 10,000 tons)

Hoist-way Parts

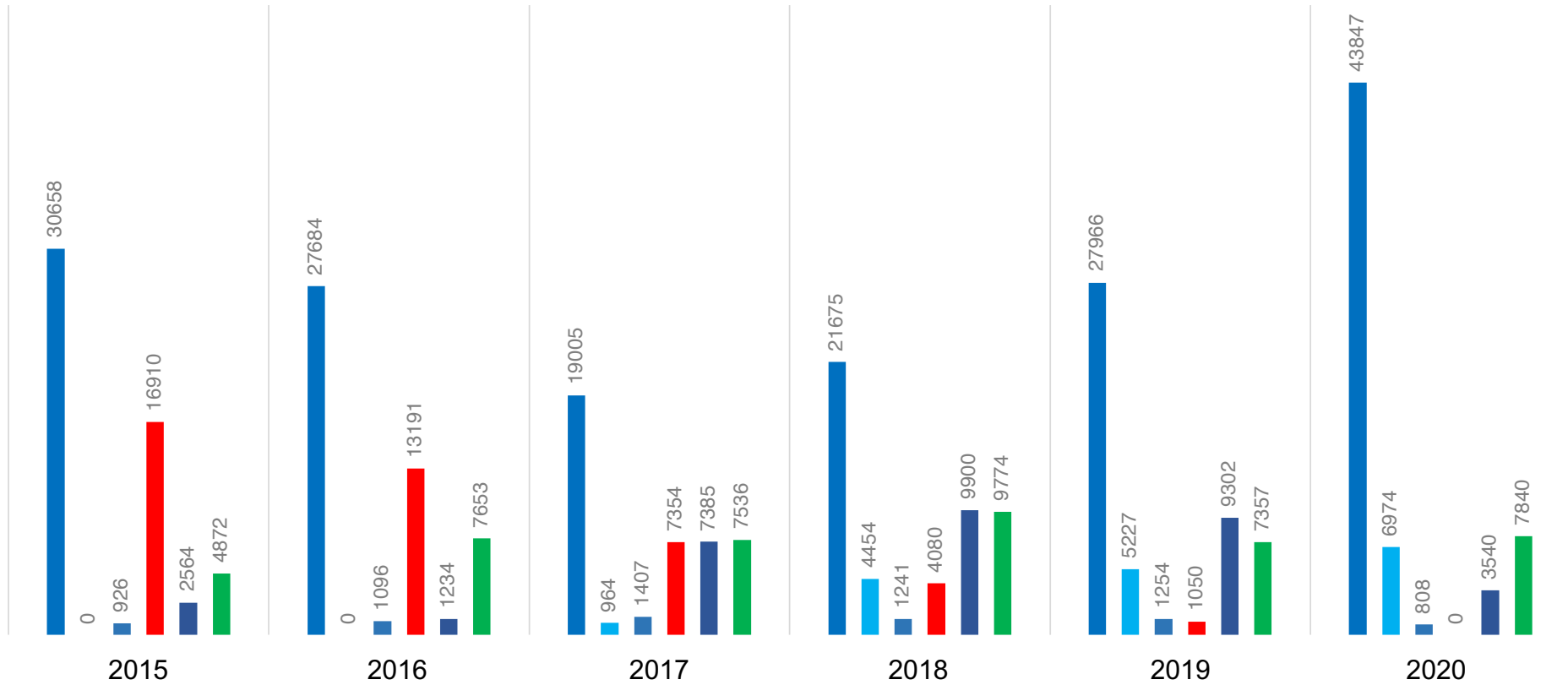


Collaboration with OTIS worldwide

2015-2020

Unit: tons

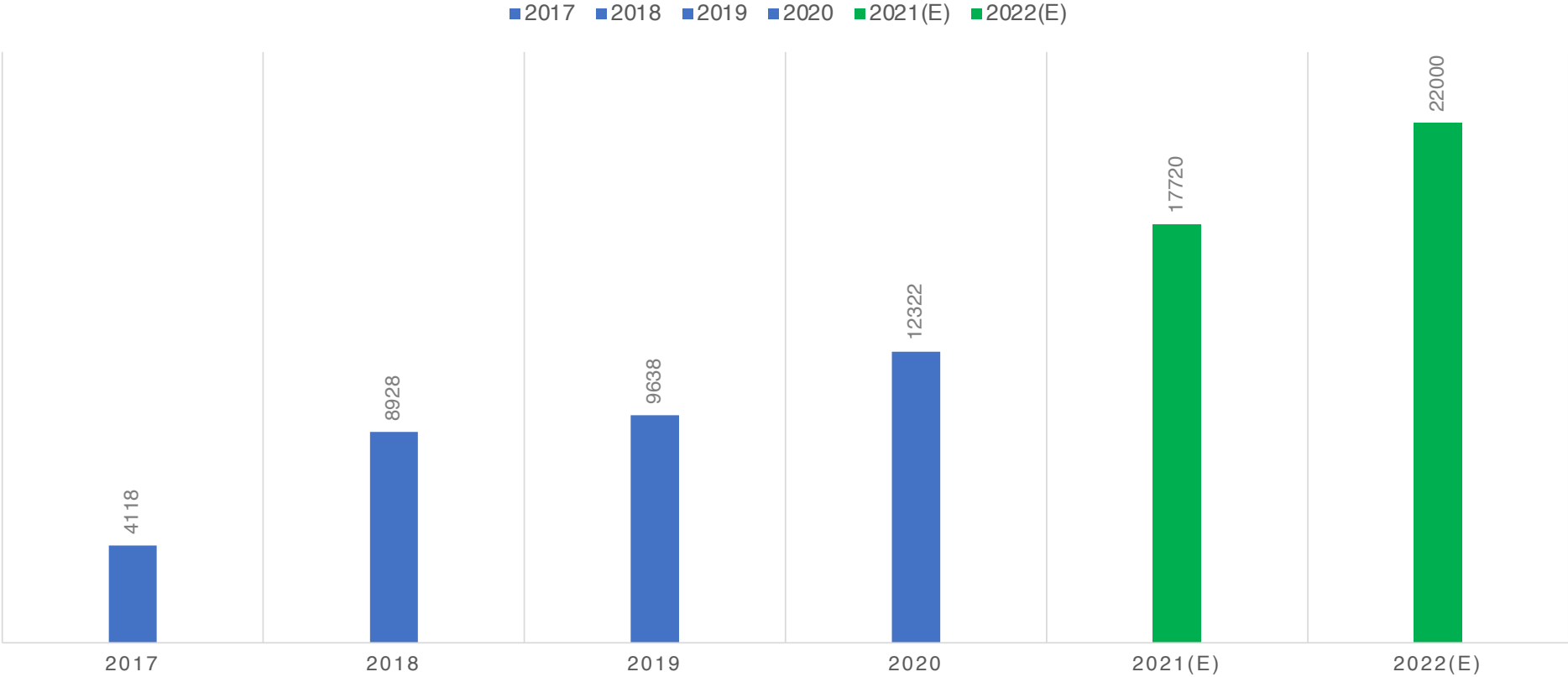
■ OECC ■ OE ■ GOEC ■ Sigma & Express ■ Otis HR CLC ■ Export



Guide Rail Supplies to Otis in BU



Complete Lifts Delivered from Zhangjiagang DC



Strategic Layout in China



Strategic Layout in China

ZJG HQ



Zhangjiagang HQ:

Location: Zhangjiagang, Suzhou

Area: 250,000m²

Equipment :

42 CNC planers (medium & low rise) +

15 processing lines

5 magnetic CNC planers (high rise) +

2 process lines

3 super planers (medium & high rise) +

3 processing lines

15 roll forming lines

Function:

R&D

Manufacturing

Packaging

Warehousing

Logistics

Total capacity: 280,000 tons

Monthly max volume: 20,000 tons

Strategic Layout in China

Tianjin DC



Tianjin DC:

Location: Binhai, Tianjin

Area : 33,000m²

Equipment :

1 processing line

1 roll forming line

Function:

Manufacturing

Packaging

Warehousing

Logistics

Monthly max volume: 3,000 tons

Strategic Layout in China

Chengdu DC

Chengdu DC:

Location: Qingbaijiang, Chengdu

Area: 3,000m²

Equipment: 1 processing line

Function:

Manufacturing

Packaging

Warehousing

Logistics

Monthly max volume: 1,500 tons

Strategic Layout in China



Guangzhou DC:

Location: Foshan, Guangdong

Area: 16,000m²

Equipment:

1 processing line

2 escalator rail curving lines

Function:

Manufacturing

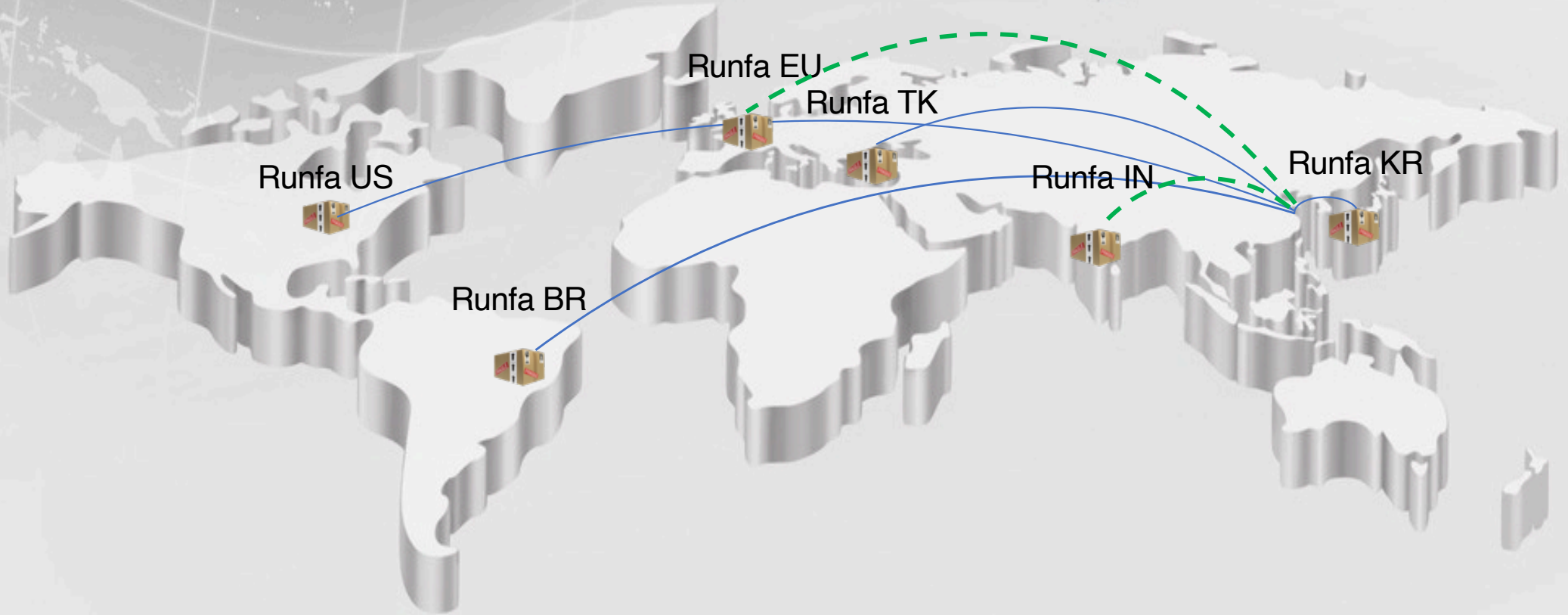
Packaging

Warehousing

Logistics

Monthly max volume: 2,000 tons

Global Strategic Layout





Runfa USA - Partner in US



Overview

- Standard Elevator Systems is established since 2007 exclusively for the purpose of elevator product distribution worldwide.
- Core competence
 - Professional in heavy weight elevator product handling
 - ERP driven to minimize shipping and handling errors
 - Rich experience with elevator product functions
 - Seasoned technical support staff from the elevator industry
 - Understanding of the elevator field customer need
 - Worldwide reach opportunity
- Managed from
Standard Elevator Systems
4949 East Raines Rd. Memphis, Tn 38118
+1(901) 290-1600
Website: <https://standard-elevator.com>

Full-service distribution center in Memphis, Tennessee

- 200,000+ sqft distribution center centrally located in Memphis, Tennessee in USA
- Fully staffed distribution Center
- Fully implemented SAP system to ensure operation accuracy.
- **Ship per order covering entire North America**
- Technical support from experienced professional in the elevator industry in North America
- Fully insured and licensed in US



Full-service distribution center in Memphis, Tennessee

Service: Guide rails to be shipped per order covering entire North America.

- Over 50,000 sqft for distribution center of guide rails and accessories
- Standard guide rails and accessories warehousing
- Short rails manufacturing facilities
- Packing per each contract specific
- Deliver rails to Otis designated sites covering entire North America
- Field support within 24 hours



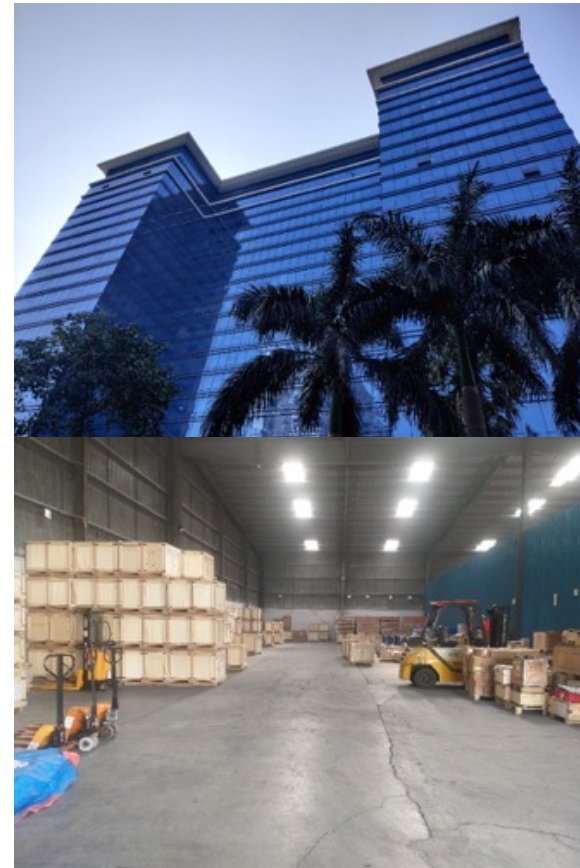
Full-service distribution center in Sao Paulo, Brazil

- 100,000+ sqft distribution center strategically located in Sao Paulo metropolitan area.
- Fully staffed distribution Center.
- SAP implementation will be finished Q1 2020
- Taking orders, handling import processes and dispatch products covering entire Brazil
- Technical support from experienced professional in the elevator industry in Brazil.
- 24 Hour Security Monitoring



Full-service distribution center in Mumbai, India

- 100,000+ sqft distribution center strategically located in Mumbai, India.
- CBD office staffed with engineers and support staff.
- SAP implementation will be finished Q1 2020
- Taking orders, handling import processes and dispatch products covering entire India
- Technical support from experienced professional in the elevator industry in India.
- 24 Hour Security Monitoring



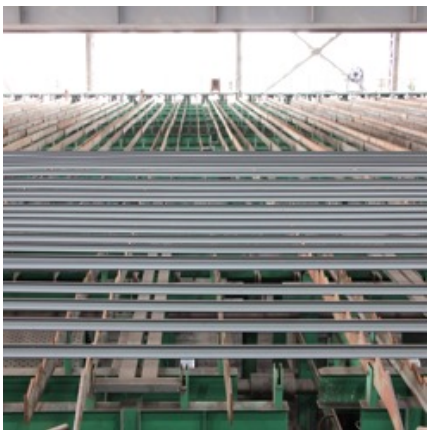
Full-service Distribution Centers

- **Memphis, USA**
(Opened in 2007)
- **Sao Paulo, Brazil**
(Opened in 2008)
- **Mumbai, India**
(Opened in 2012)
- **Krakow, Poland**
(Opened in 2014)

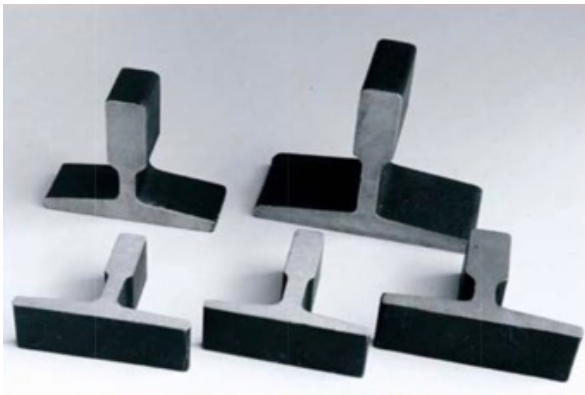


Special Sections

Facilities & Process



Product Mix



Rail profiles
(Capacity: 300,000 tons)

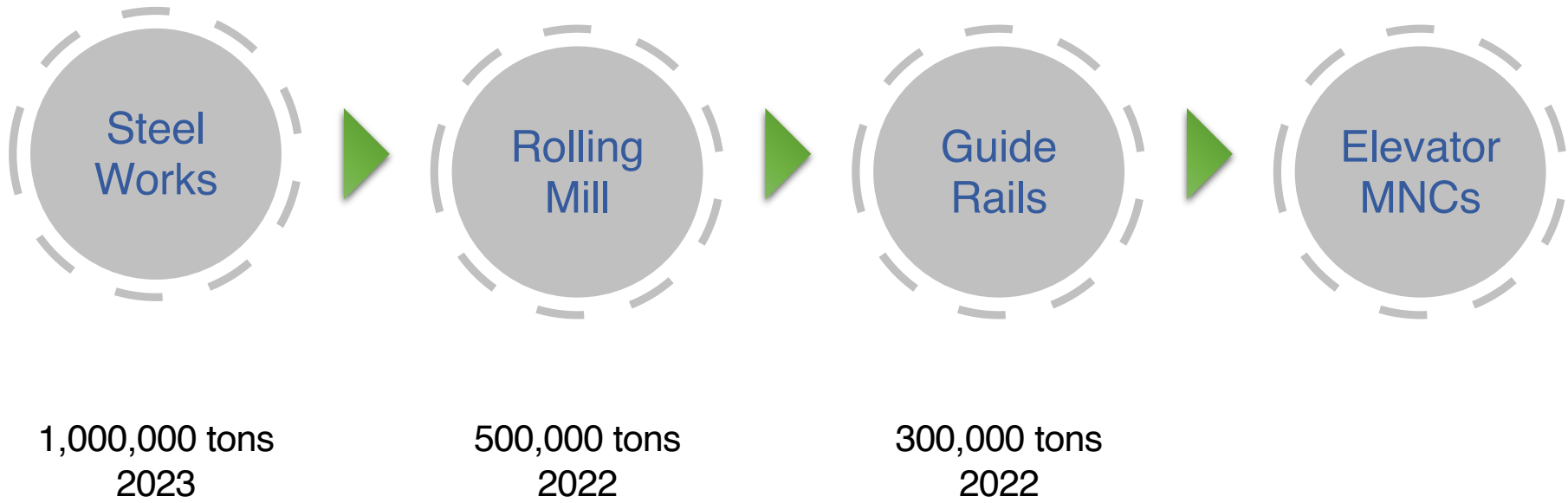


Angles
(Capacity: 250,000 tons)



Steel channels
(Capacity: 50,000 tons)

Vertical Integration Outlook



Win-win Cooperation



Location: Jingang, Zhangjiagang, Jiangsu, China

Postcode: 215633

Website: www.cjrfjx.com

Contact: 0086-512-56926620